

The Green Team's Dusk-To-Dawn LED Light

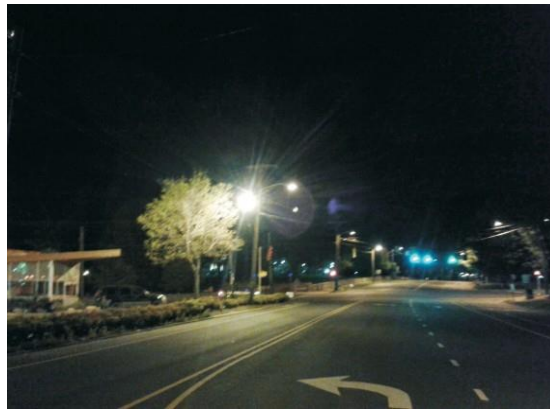


Product Description

The Green Team's Dusk-to-Dawn fixture has a beautiful design while keeping the same look as tradition Dusk-to-Dawn light fixtures. Featuring a solid IP66 LED driver and superb heat dissipation management. High performance illumination which last 50,000hrs, this fixture is ideal for replacing 80W-175W MH or HPS fixtures, with typical energy savings of more than 80%.

Application

General area and security lighting, barns, garages, overall area lighting, etc.



Electric Characteristic

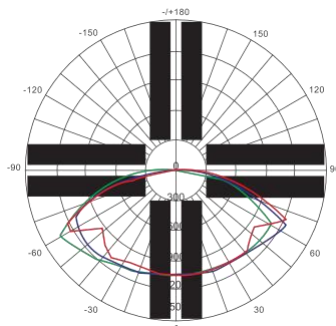
Specification/Model	GT-SLF35W 5000K	GT-SLF55W 5000K
LED Chips	Philip3030	
Input power	35W	55W
Lumens output	4550LM	7150LM
Efficiency	130LM/W	130LM/W
	75	
Color Temperature	3000K/4000K/5000K	
Input voltage	100-277V UL Driver	
Lighting beam	150D	
Working temperature	-30-+60℃	
Junction temperature	< 75℃	
lamps efficiency	≥90%	
Certificates	UL, CUL, DLC	
Equivalent	80W-150W MH/HPS	120W-175W MH/HPS

Ordering Information

Example GT-SLF35W 5000K

Product	Power	Replacement	Color temperature	Photocell
GT-SLF35W 5000K	35W	35W	30K 3000K 40K 4000K 50K 5000K	N not photocell
GT-SLF55W 5000K	55W	55W		Y yes photocell

Photometrics

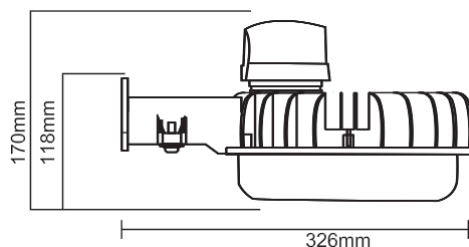


Projected LED Lumen Maintenance

Operating hours	0	25000	50000
Lumen maintenance factor	0	0.91	0.8

Data references the extrapolated performance projections for the Dusk-to-Dawn LED Fixture platform in 25°C ambient, based on 10,000 hours of LED testing (tested per IESNA LM-80-08 and projected per IESNA TM-21-11).

Dimensions:



After sale Service:

The product refers to electrical knowledge. Please don't disassemble it by yourself. If any quality problem happens, please contact The Green Team for warranty details.

NOTE: Actual performance may differ as a result of end-user environment and application.